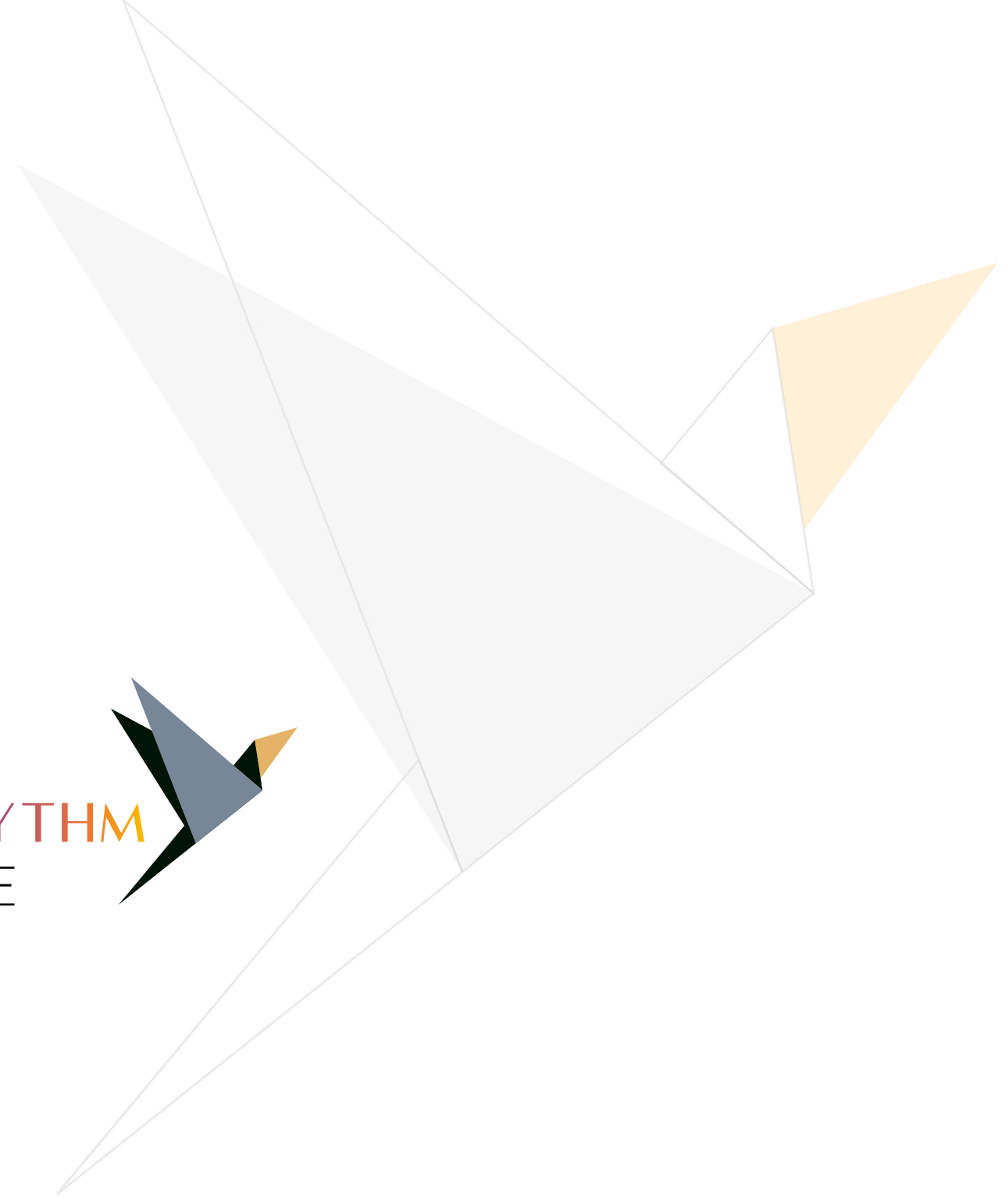


LIVE THE RHYTHM  
OF YOUR LIFE





FEEL THE

*Vibe*

2 | 3 BHK APARTMENTS & SHOPS  
COMING SOON @ SOUTH BOPAL

---

# GROUND FLOOR PLAN



# FIRST FLOOR PLAN



# SECOND FLOOR PLAN



# TYPICAL FLOOR PLAN

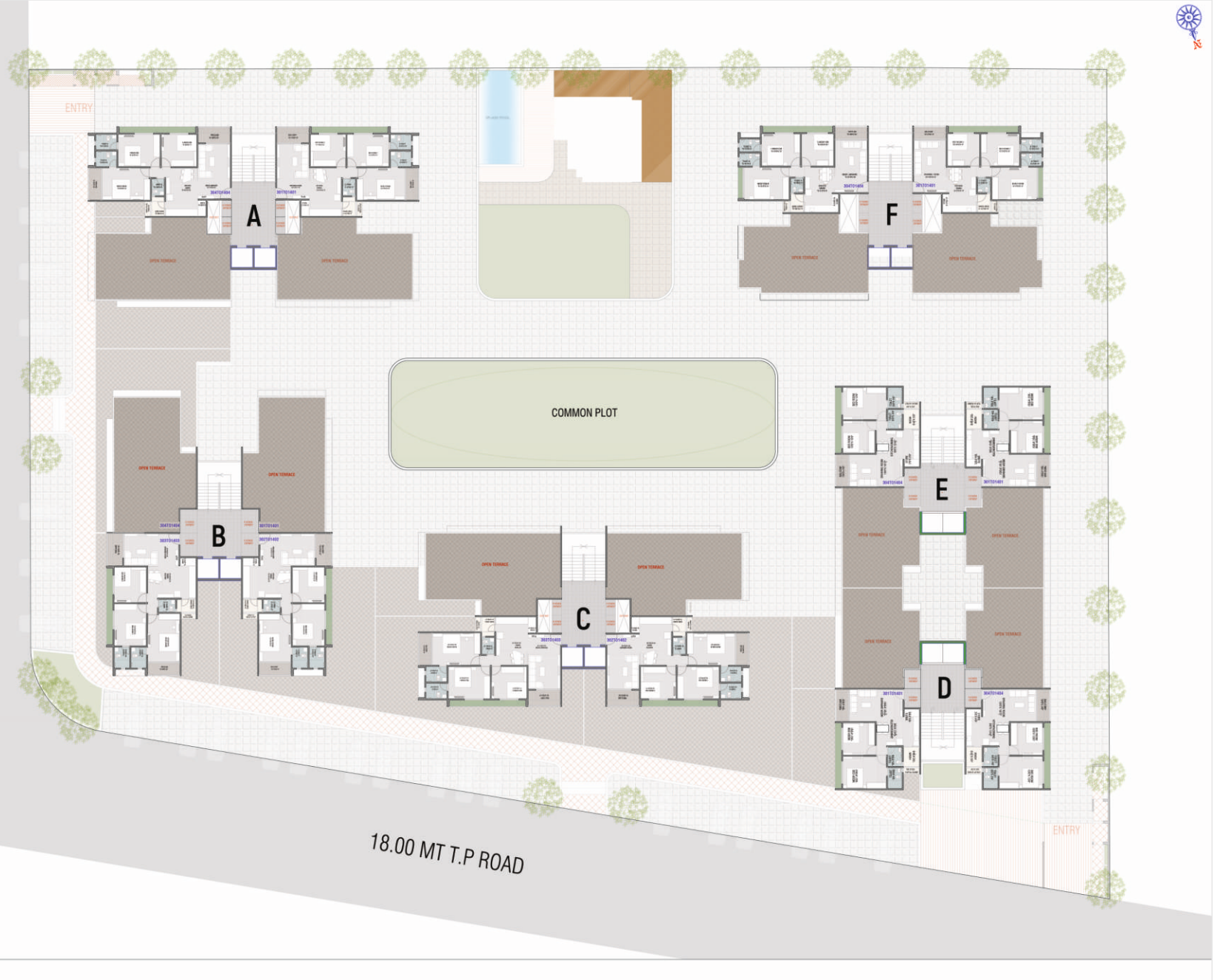
- | **Block A Foyer**  
13'7.5" x 19'9"
- | **Block B Foyer**  
13'7.5" x 12'0"
- | **Block C Foyer**  
13'7.5" x 19'9"
- | **Block D Foyer**  
13'7.5" x 15'0"
- | **Block E Foyer**  
13'7.5" x 15'0"
- | **Block F Foyer**  
13'7.5" x 15'0"



# FOURTEEN FLOOR PLAN PENTHOUSE



18.00 MT T.P. ROAD



18.00 MT T.P. ROAD

ENTRY



# 3 BHK UNIT PLAN



2 ROAD  
CORNER PROJECT IN  
SOUTH BOPAL WITH  
2 BIG BALCONY





# 3 BHK UNIT PLAN



2 ROAD  
CORNER PROJECT IN  
SOUTH BOPAL WITH  
2 BIG BALCONY



# 3 BHK UNIT PLAN



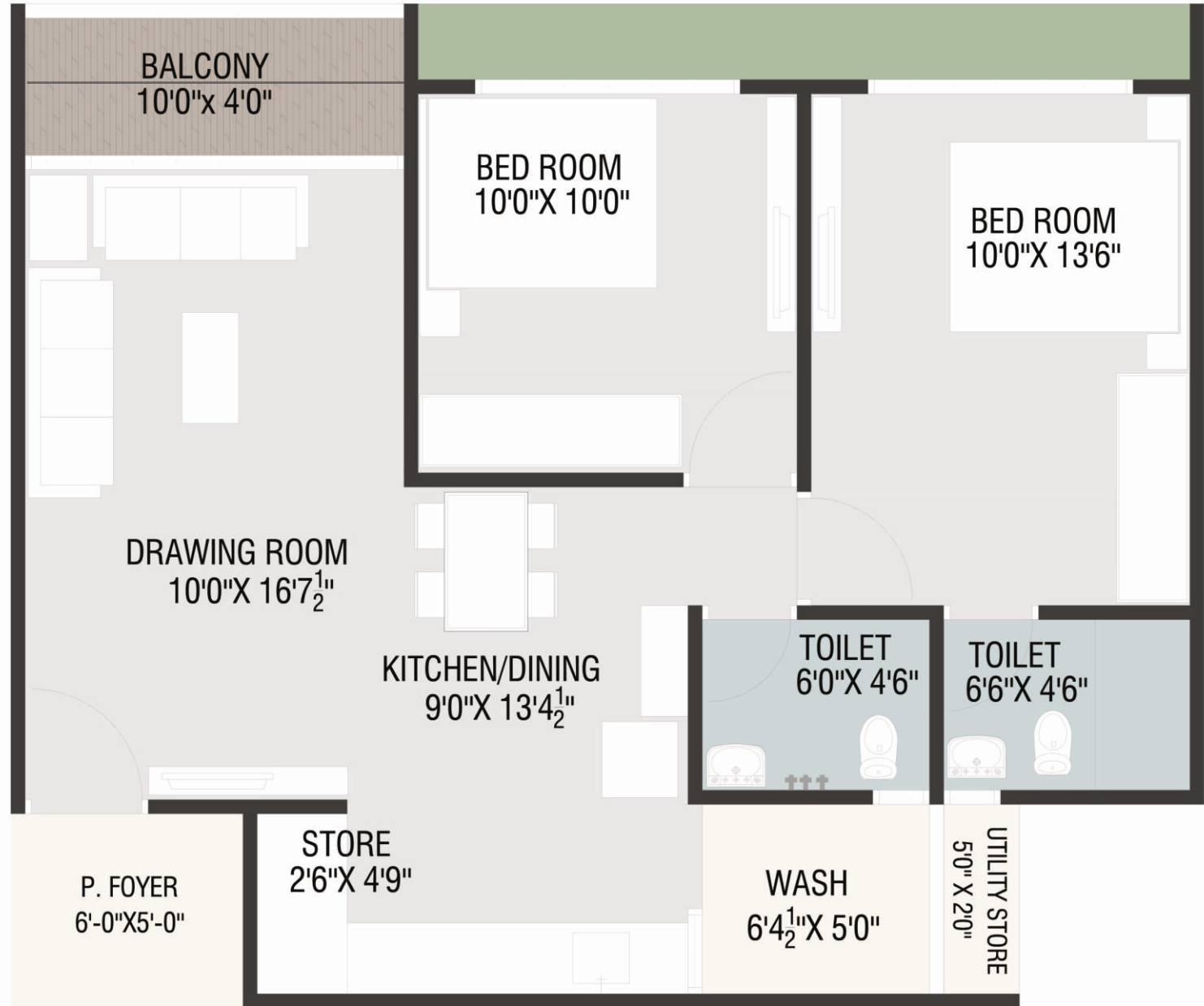
2 ROAD  
CORNER PROJECT IN  
SOUTH BOPAL WITH  
BIG BALCONY



# 2 BHK UNIT PLAN



2 ROAD  
CORNER PROJECT IN  
SOUTH BOPAL WITH  
BIG BALCONY



THANK YOU

